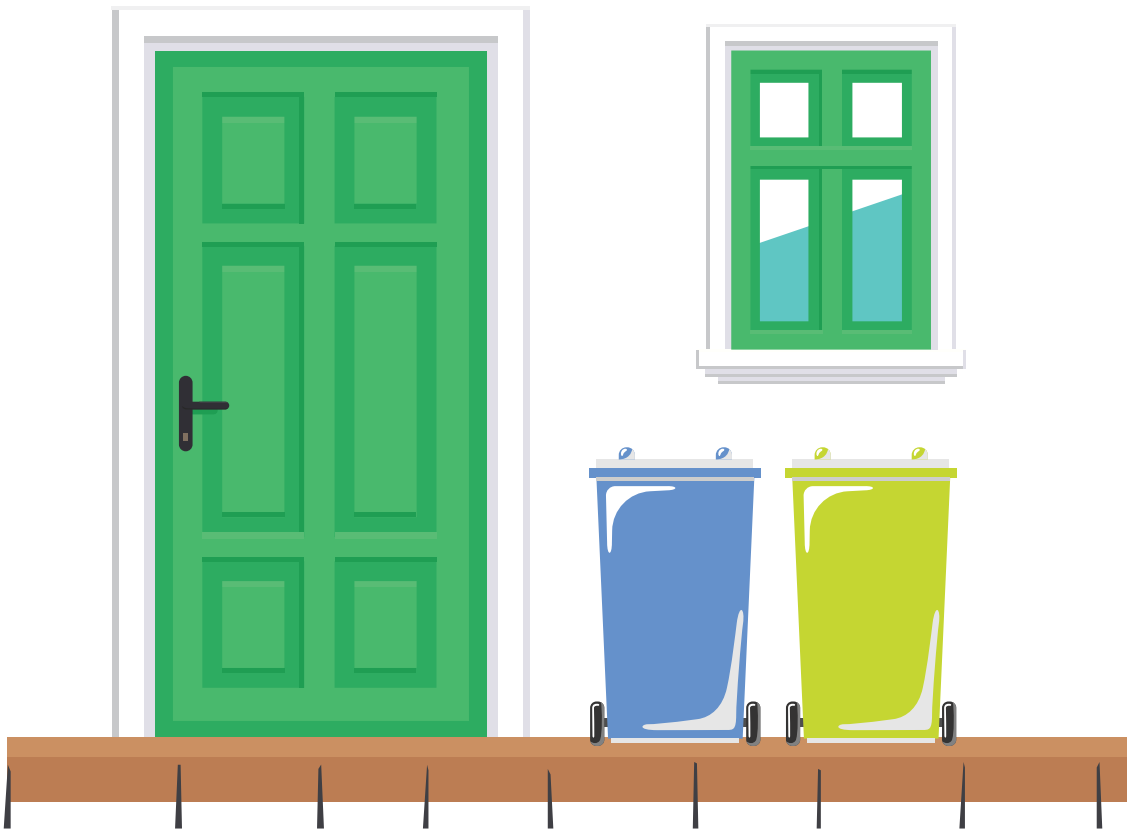




A HEALTHIER TOMORROW
BAXTER SUSTAINABILITY

PD RECYCLING AT HOME



Baxter



WELCOME

TO THE BAXTER PD RECYCLING AT HOME PROGRAM

Now that you have started on Peritoneal Dialysis, you will find that the therapy creates a large amount of plastic bag and cardboard waste. If you receive your therapy from a Baxter delivery driver, Baxter can help you manage this waste through the free and easy PD Recycling at Home program.

FREQUENTLY ASKED QUESTIONS

WHO CAN RECYCLE?

Any patient who lives in a metropolitan area and has their therapy items dropped off by a Baxter delivery driver is eligible for the program. Not sure if you are eligible? Call Homecare on AUS 1800 812 740 or NZ 0800 466 322

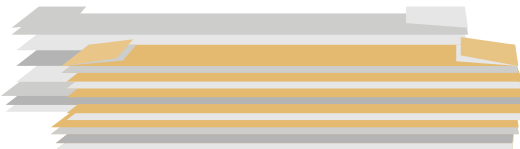


WILL RECYCLING COST ME ANYTHING?

No. The program costs are paid for by Baxter. After you sign up for the program Baxter will give you 2 small recycling bins as part of your next PD delivery.

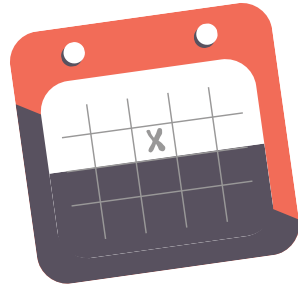
WHAT DOES BAXTER PICK UP?

Our Baxter delivery drivers will collect the plastic you recycle from the 2 bins, as well as folded cardboard boxes.



WHEN WILL MY RECYCLING BE PICKED UP?

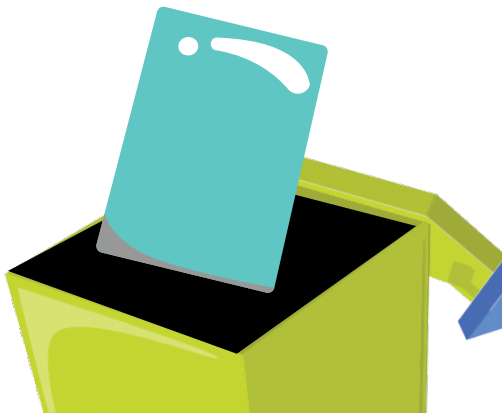
Your recycling will be collected each month when your Baxter driver drops off your next delivery.



WHAT CAN I PUT INTO THE BINS?

The driver will place bin liners into each of the bins for you. Please put only clean printed solution bags and their overpouches into these. Dirty waste bags, cassettes and other household recycling should be placed into your household bins.

OVERPOUCHES GO INTO THE SUPPLIED GREEN BIN



CLEAN EMPTY SOLUTION BAGS WITH THE BOTTOM REMOVED GO INTO THE SUPPLIED BLUE BIN

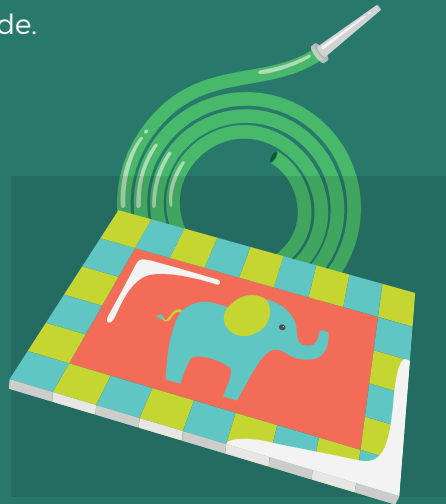


DO I NEED TO PUT MY RECYCLING OUTSIDE WITH MY OTHER TRASH?

No, you can leave your recycling inside.

WHAT HAPPENS TO MY RECYCLING?

Cardboard goes into regular cardboard recycling. Collected PVC is sent to a PVC manufacturer to be made into products such as garden hose or flooring.



HOW CAN I SIGN UP?

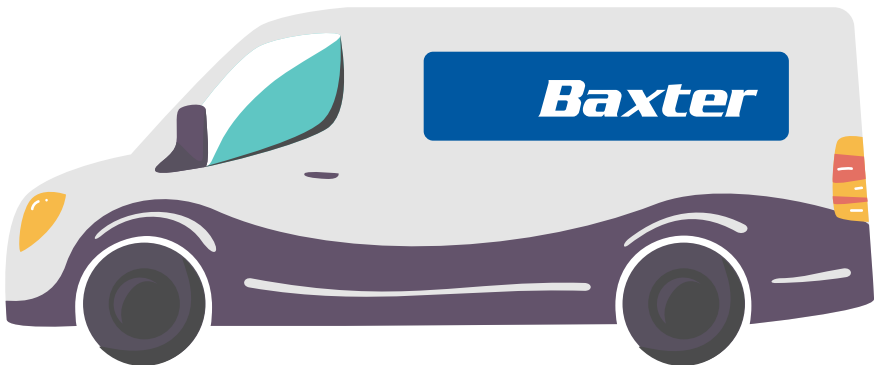
Please speak with your renal nurse, who will notify Baxter that you want to be involved. Alternatively you can call Homecare on the numbers below.

CALL HOMECARE ON
AUSTRALIA 1800 812 740
NEW ZEALAND 0800 466 322

DRIVER RESPONSIBILITY

During the monthly inventory delivery, the driver will perform the following duties:

- Remove all flattened and stacked Baxter cartons.
- Remove bin liners, including the contents of each bin.
- Replace bin liners.



The delivery driver will conduct a visual inspection of the bin contents to ensure only suitable items are in the bins. If the bin contains unsuitable items, the driver will request that you dispose of the contents with your general household waste. The driver will be able to answer any questions you may have about which items are suitable for recycling.



PATIENT RESPONSIBILITY

Home patients who have chosen to participate in this voluntary program are responsible for:

- General cleanliness of the bin.
- Ensuring the bin is not damaged.
- Placing suitable items in each bin.
- Allowing reasonable access for the delivery driver to empty the bins.
- With scissors remove the bottom of the clean bag to remove tubing before recycling. Place tubing into your waste bin.



WANT TO FIND OUT IF YOU ARE ELIGIBLE FOR RECYCLING AT HOME PROGRAM FOR PD PATIENTS?

CALL HOMECARE ON
AUSTRALIA 1800 812 740
NEW ZEALAND 0800 466 322



Australia

Baxter Healthcare Pty Ltd
1 Baxter Drive, Old Toongabbie
NSW 2146 Australia
Tel: +61 1800 BAXTER (+61 1800 229 837)
Fax: +61 2 98481123

New Zealand

Baxter Healthcare Ltd.
33 Vestey Drive, Mt Wellington,
Auckland 1060, New Zealand
Tel: +64 (0)800 BAXTER (+64 (0)800 229 837)
Fax: +64 (0)800 229 239